

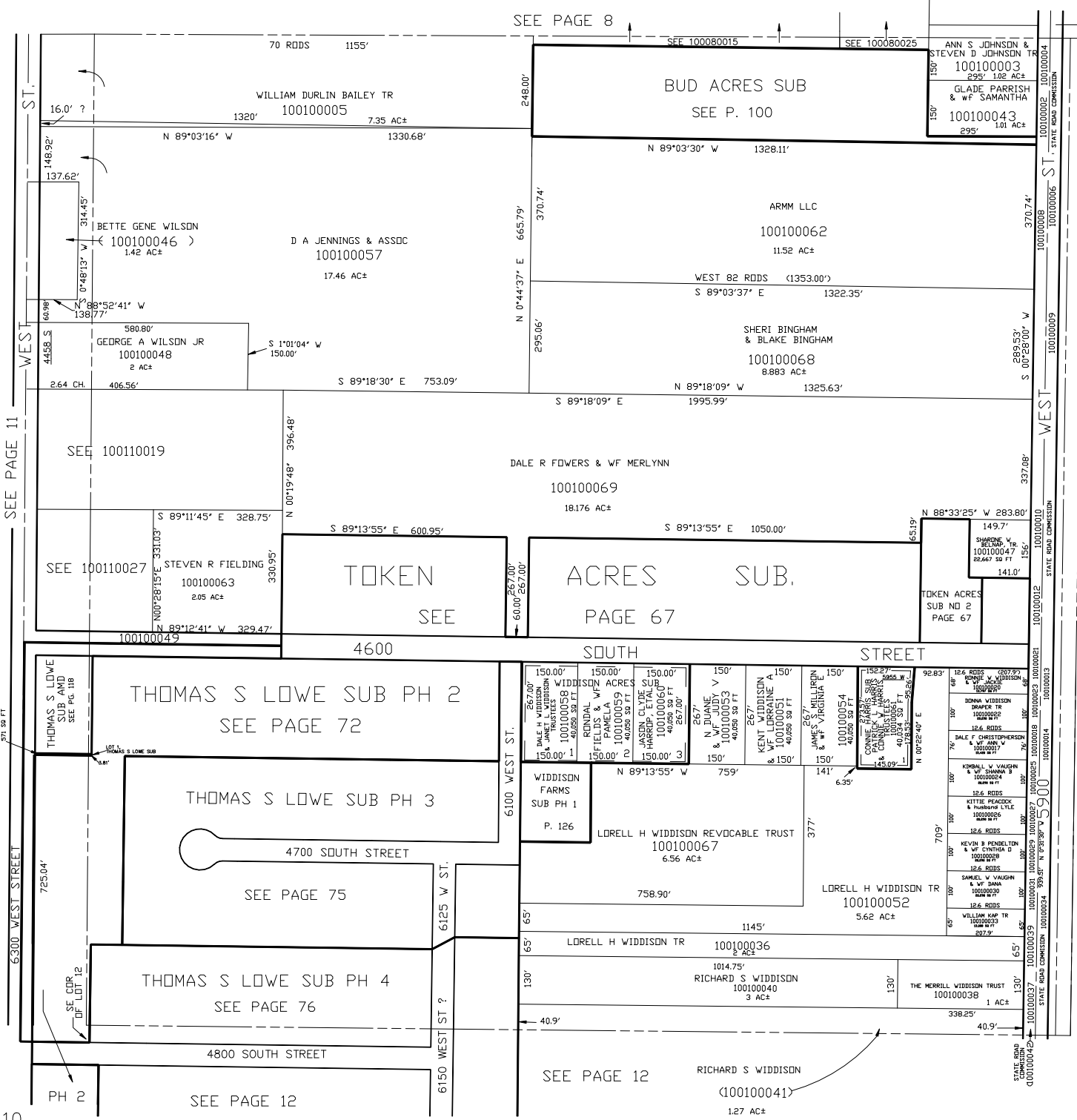
SE 1/4  
SECTION 12, T.5N., R.3W., S.L.B. & M.

IN HOOPER CITY  
SCALE 1" = 200'

TAXING UNIT: 376

SEE PAGE 8

COR. FOR  
SOME DESC.



SEE PAGE 11

10

SEE BOOK 8, PAGE 46

KBR 04-92